



GRANDTHUM

LIFE LIVES HERE

LIFE THRIVES HERE



INFINITE POSSIBILITIES BEGIN HERE

Grandthum fits in naturally into this boundless ecosystem that is our lives. It makes the new-age sanctuary of the contemporary professionals, who don't look at the calendar or wait for the weekend, before stepping out, the wonderland of the young who yearn for an adrenaline rush, and the go-to place for those who want everything under one roof.

A landmark icon in Greater Noida, Grandthum brings together elements of retail, entertainment, office spaces, and serviced apartments to create an ecosystem that offers infinite possibilities.

Greater Noida's first organised shopping centre

- Presents an interesting mix of leisure, fine dining, entertainment and interactive spaces
- Integrated with Yatch Island – an ultra-modern Amusement Park
- Houses Yatch Garden – a luxurious and elegant dining space
- A mixed-use development spreading over 25 acres

BHUTANI INFRA

PRESENTS

GRAND THUM

GRANDTHUM

BY


BHUTANI
INFRA





ARTISTIC IMPRESSION OF TWIN TOWERS

DESIGN OPENS NEW AVENUES HERE

Drawing its inspiration from 'water and mountain', Grandthum creates a contemporary space, which is a beautiful blend of form and functionality. Imbibing the nature of water, it spreads out evenly, offering accessibility and equal visibility. A design that is unrivalled by multi-spaces at par, locally and globally, with features that predetermine the success of any retail centre.

With its vast range of facilities and vivid light display, it infuses energy and activity into Noida's contemporary culture.

- Iconic twin tower design for office spaces
- Double-level figure eight design for retail and entertainment spaces
- Stunning dining space inspired by yachts in water - 'The Yatch Garden'
- Unhindered walkability and a condensed footprint

TIME SLOWS DOWN IN A YACHT HERE

Imagine a serene evening with the aroma of the food in the air and a pleasant coolness from the water surrounding you. That is how an open air dining experience will be at the Yacht Garden.

An outdoor seating area surrounded by water and inspired by a yacht, the Yacht Garden offers you the space to relax, dine and simply be in the moment. To enhance the experience further, it will also have smaller yachts floating around you.

- Modelled like a yacht
- Smaller floating boats for rides





AN ADRENALINE RUSH FILLS EVERY DAY HERE

If being flexible means slowing down time at your own will, it also means pressing the adventure button and getting ready for an exciting ride, as you please.

The Adventure Island at Grandthum gives you a reason to turn any dull day into a day of exhilaration and euphoria.

- Integrated world-class amusement park
- Superior quality rides
- All safety measures in place



BULL & BEAR MARKET

RETURNS THAT GROW WITH THE MARKET



Your returns are not fixed, rather they have infinite potential for growth. When the market is a bull market that is on the rise, your returns will grow at rapid rate.

On the other hand, in a bear market i.e. in a declining market, the returns may experience some slowdown.

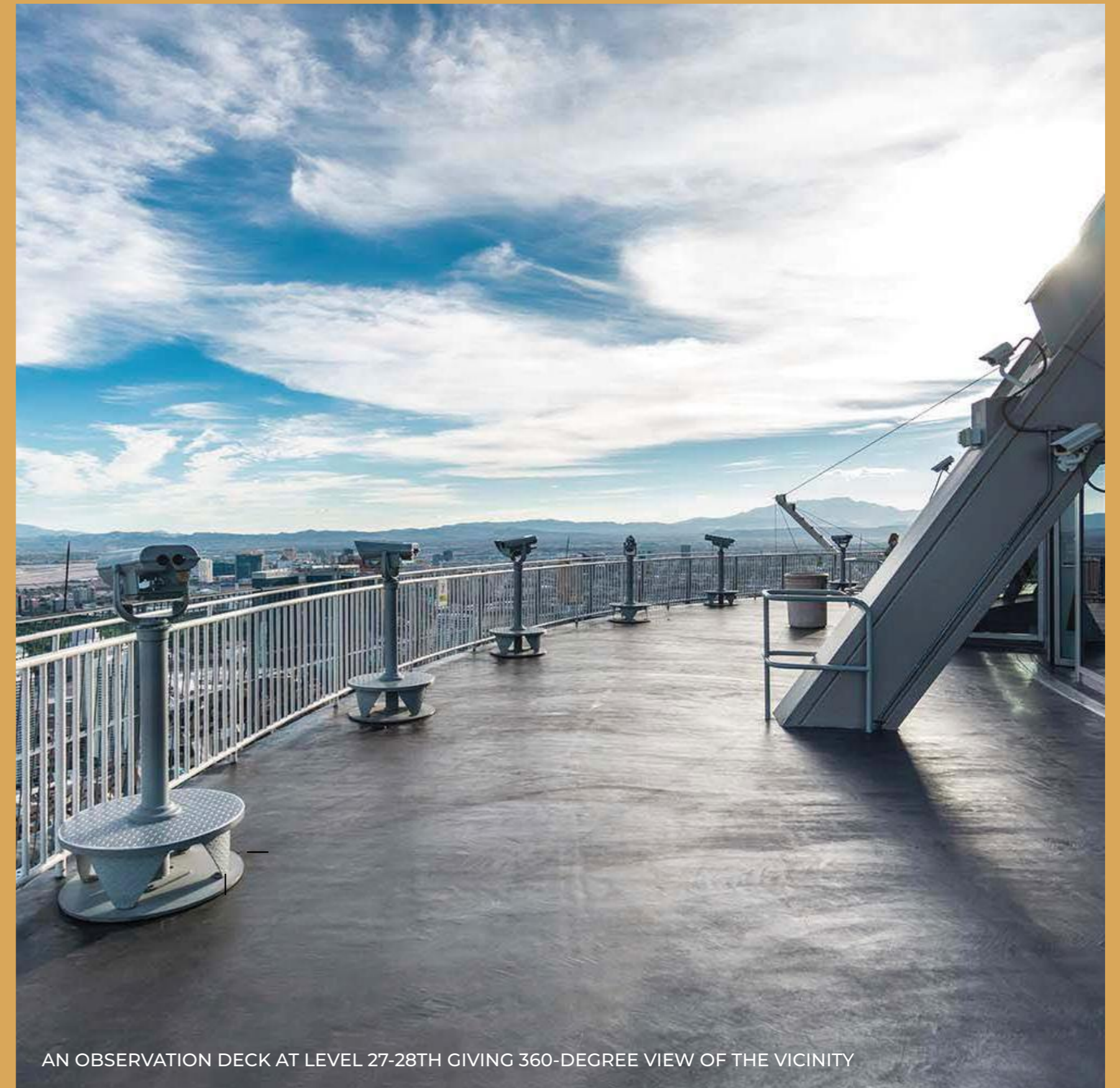
Therefore in an economy experiencing a surge, you won't have to be satisfied with limited returns.

WHERE WALLS MAKE ROOM FOR FREE MOVEMENT

At Grandthum, the essence of design is fluidity, that is allowing movement that breaks barriers and helps create interaction and a sense of community.

It reflects in every aspect of our design, like on-grade parking decks that can be accessed via ingenious, undulating ring road system that eliminates the need for ramp systems, thereby giving equal access to both retail levels; or natural light and connectivity between the two levels, which make them part of one whole ecosystem.

By not surrounding the building with parking, connectivity to the rest of the Grandthum precinct is ensured.



AN OBSERVATION DECK AT LEVEL 27-28TH GIVING 360-DEGREE VIEW OF THE VICINITY

WHERE YOU FIND EVERYTHING AT ONE PLACE



Complete retail destination with a thrilling and enjoyable experience at Adventure Island (Amusement park)



The perfect place for short family breaks and shopaholic's paradise



A hypermarket to effectively cater to the needs of the high density of population in Delhi and NCR



Water showers located within the shopping center which would help you to relax in the open air



This shopping arcade have more than 100 outlets which includes F & B, retail outlets



Multi cuisine food court with fine dining and specialty snacks and various restaurants



The rides are being imported from Leading European companies which supply to Disney and Universal studio



A VIEW OF RETAIL ARENA

LIFE ELEVATES HERE





ARTISTIC IMPRESSION OF OFFICE SPACE

WORK SPACES PRESENT NEW OPPORTUNITIES HERE

The balance to work-life begins right from the ecosystem you are in, and the office spaces at Grandthum present the perfect amalgamation of working and networking. For modern professionals, it means a day of work followed by socialising over dinner which in turn helps build more contacts and open new avenues for business.

- Two high rise towers with 34 floors dedicated to office spaces
- Plug and play models for entrepreneurs, professionals and small businesses
- Large, flexible spaces for medium to large businesses

SPACES CREATE ENDLESS POSSIBILITIES HERE

In a world, where the term social increasingly finds itself in the digital dictionary, our spaces call for rethinking interaction.

Grandthum presents the finest concoction of dining, shopping and leisure that can bring together families, friends, colleagues or people with similar interests.



GREAT FOOD IS SERVED WITH GREAT VIEWS HERE

RESTAURANT AND CAFE

It's the time between getting off from work and before hitting the bed, that you get for the most important things in life - to discuss new ideas, have deep conversations, and spend quality time with family. That's why you need nothing less than the perfect setup. An open space with a stunning view and all kinds of cozy cafes, coffee shops, bistros and restaurants.

- Dedicated space for different kinds of cafes and restaurants
- Overlooking the waters and yachts
- Great ambience for spending quality time



ARTISTIC IMPRESSION OF THE RESTAURANT

LIVING BECOMES AN ELEGANT LIFESTYLE HERE

When it's a matter of minutes to reach from your workspace to your apartment to head out for a drink, you get more hours out of each day to do all that you want to do. With furnished and serviced apartments to take care of your every need, all you have to think about is your work and things to do after work.

- Studio apartments for professionals, entrepreneurs and corporates
- Equipped with full kitchens, Wi-Fi and more
- Amenities include room service, housekeeping, laundry and more



ARTISTIC IMPRESSION OF STUDIO APARTMENTS



SHOPPING ARCADE

In a world where great lifestyles are about making choices, the shopping arcade at Grandthum ensures that a person never run out of options. Be it fashion, cosmetics, gadgets or anything under the sun, there's room for all kinds of products and services.

- More than 100 outlets
- Built with the most modern technology
- Easily accessible
- Plug and play stores



FOOD COURT & FINE DINING

Food is no longer just food, it's an experience in itself, and a key element of Grandthum, the way we see it. This experience is enhanced by presenting an array of flavours to the customer, from a full-fledged food court to fine dining, to make sure there's something for every mood and everybody's taste.

- Multi-cuisine food court
- Fine dining
- Cafes and specialities



HYPERMART

Even in the high-density areas of Greater Noida, there is still a scarcity of retail or daily infrastructure needs. The Hypermart at Grandthum bridges this gap. A clearly demarcated space for the Hypermart ensures that it remains easily accessible and effectively caters to the needs of the customers.

- Designated with separate entrances
- Wide area for branding
- Easy accessibility



ANCHOR SPACES

For businesses that need to stand out or demand their own expansive spaces, the Anchor Spaces at Grandthum give them the space and visibility to help them achieve their true potential.

- At key strategic areas
- Offer maximum visibility
- Designed to get maximum footfalls
- Versatile spaces adept to change



MULTIPLEX

We can't talk about an entertainment destination without talking about movies. The multiplex at Grandthum ensures that viewers get their finest movie experience here.

- Capacity of up to 100 people per auditorium
- Equipped with cutting-edge technology

LIFE UPLIFTS HERE

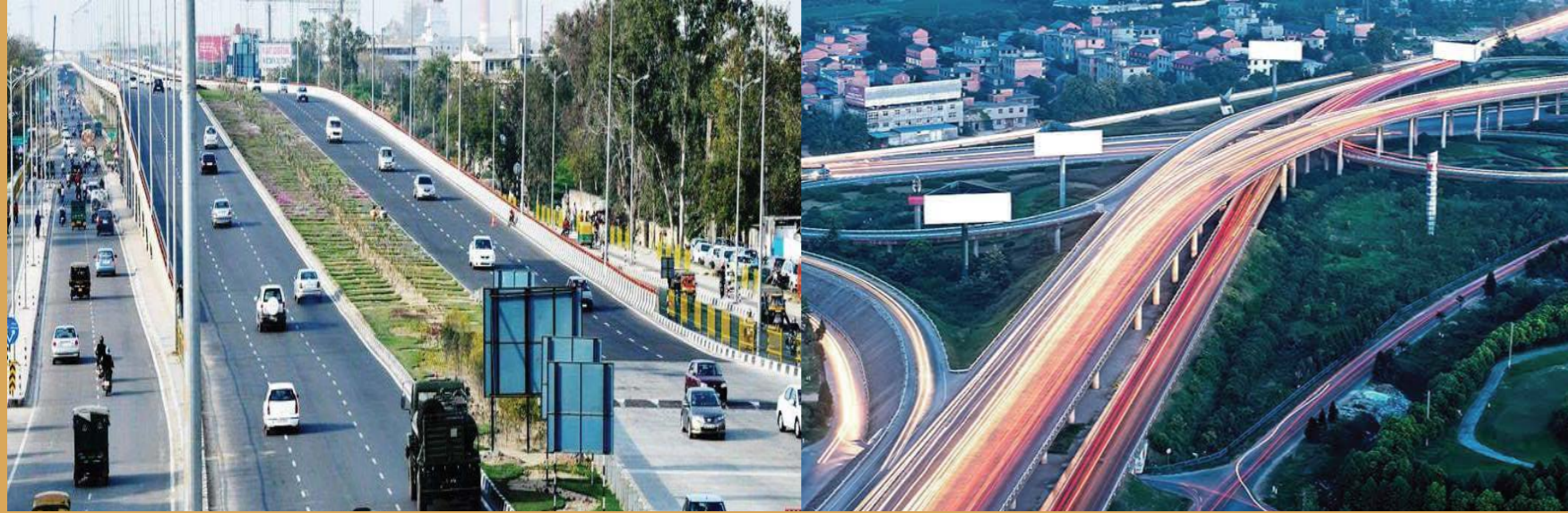


A REMARKABLE MIXED LAND USE DESTINATION

THE STANDARD MAKES WAY FOR INNOVATIVE HERE

At Grandthum, the essence of design is fluidity, that is allowing movement that breaks barriers and helps create interaction and a sense of community. It reflects in every aspect of our design.

- On-grade parking decks with ingenious, accessible through undulating ring road system eliminating the need for ramp systems
- Equal access to both retail levels which will help utilise both levels to their full potential
- Natural light and connectivity between the two levels making them part of one ecosystem
- Building not surrounded by parking making reaching Grandthum less of a hassle



WHERE STAYING CONNECTED COMES EASY

Like any great city, Noida invites and impresses with a dizzying assortment of options. Here, however, the standard is simply getting higher.

With maximum budget allocations, it is said that Noida has enough funds for development even if residents don't pay taxes for five years. Known as the Gold Mine City, Noida is now quoted as an example of how newer cities should plan for future development, and of forward-looking infrastructure deployment and proactive policy creation.

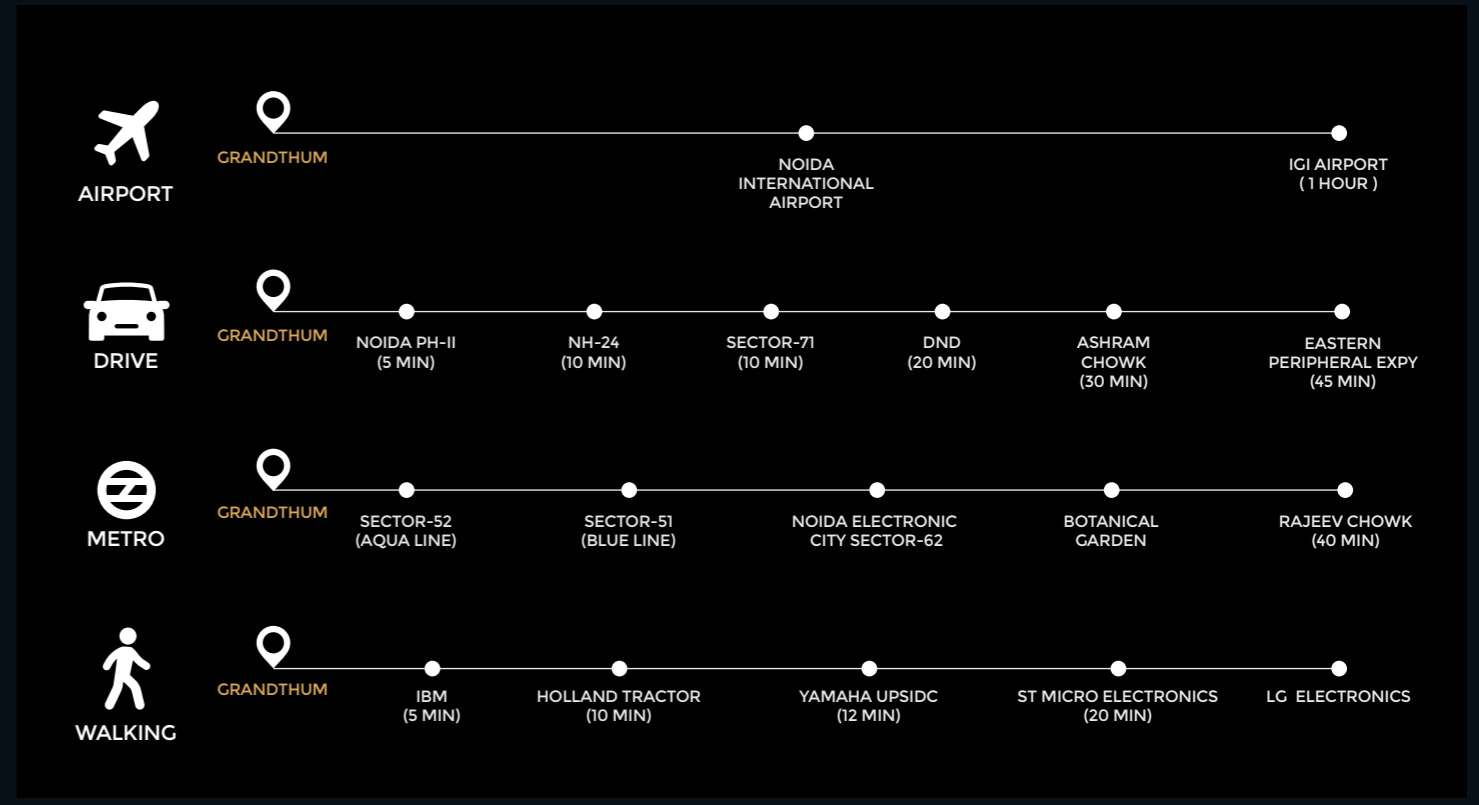
Meeting close to three-quarters of a Smart City's parameter requirements, this beautifully planned city has something for everyone, be it parks, amazing street food, lifestyle restaurants, shopping malls, street-side shopping avenues, amusement parks, pubs, nightclubs or sports complexes.

AT A GLANCE

- Low on traffic and pollution (by Indian standards)
- India's greenest city with nearly 50% green cover
- World-class healthcare facilities providing round-the-clock care
- Home to some of the world's largest technology companies including renowned mobile phone manufacturers
- Home to Buddh international circuit for Formula 1 racing
- Host to the Sunburn Arena for international artists
- City with the tallest towers in North India



LOCATED AT THE CENTER OF GROWTH



BUILDING TOMORROW ON THE FOUNDATION OF YESTERDAY

DELIVERED PROJECT BY BHUTANI GROUP



WORLD SQUARE MALL



WORLD SQUARE MALL



WORLD SQUARE HOTEL



GROUND FLOOR LAYOUT



LOWER GROUND FLOOR



THANK YOU



"Disclaimer: The contents and information contained in this brochure are intended for general marketing purposes only and should not be relied upon by any person as being complete or accurate. A.L.SOFTWEB PVT LTD. (Developer), its employees, agents and other representatives will not accept any liability suffered or incurred by any person arising out of or in connection with any reliance on the content of or intimation contained in this brochure. This limitation applies to all loss or damage of any kind, including but not limited to, compensatory, direct, indirect or consequential damage, loss or income or profit, loss of or damage to property and claims by third party". RERA No. Bhutani Group # UPRERAPRM90259, UPRERAPRJ585534/UPRERAPRJ605316/UPRERAPRJ156612/UPRERAPRJ957104 / UPRERAPRJ103135 .